

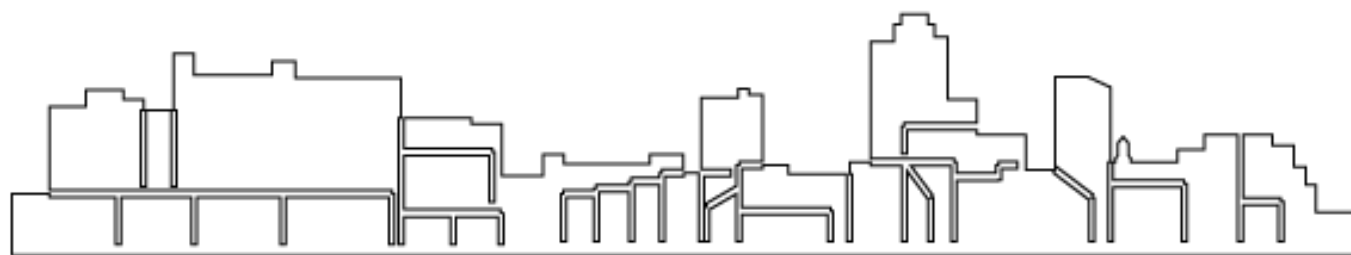
# RUTGERS

Edward J. Bloustein School  
of Planning and Public Policy

RALPH W. VOORHEES  
CENTER FOR CIVIC ENGAGEMENT

## Annual Report

### 2022-2023



RALPH W. VOORHEES  
CENTER FOR CIVIC ENGAGEMENT

---

Edward J. Bloustein School of Planning and Public Policy  
RUTGERS UNIVERSITY



# TABLE OF CONTENTS

03	About Ralph W. Voorhees
04	About the RWV Center
05	Ralph W. Voorhees Public Service Fellows
08	RWV Center Team
10	Student Researcher Profiles
13	Research Highlights
15	Faculty Profiles
16	Publications
19	Collaborations
20	RWV Center Events
24	Conference Presentations

# ABOUT RALPH W. VOORHEES



Ralph W. Voorhees was a 1948 graduate of Rutgers University, where he was a member of the Phi Beta Kappa honorary society. Mr. Voorhees was senior vice president for investments at Paine Weber, served as a member of ASA Holdings Inc.'s Board of Directors, and as chairman of the boards of the United Way of Central New Jersey, Family Counseling Services of Middlesex County, the Robert Wood Johnson University Hospital, and the New Brunswick Cultural Center. At Rutgers, he was chairman of the University Foundation and served on the University Foundation's Board of Overseers.

He was inducted into the Rutgers Hall of Distinguished Alumni and received the Presidential Recognition and the Loyal Son of Rutgers Awards. He served as a member of the Voorhees College Board of Trustees where he received the Keeper of the Flame Award for continuing his family's legacy of supporting the college.

Mr. Voorhees lived in Highland Park, NJ where his activities spanned health, urban renewal and education and then in New Brunswick. A sterling example of volunteerism and civic engagement at its very best, Mr. Voorhees dedicated many years to service in several areas of university and community life, demonstrating vision, unquestionable altruism, and outstanding success as a philanthropic leader.



# ABOUT THE RWV CENTER

## About the Center

In honor of Mr. Voorhees' vision, civic engagement and service contributions, in 2011 the Voorhees family established the Ralph W. Voorhees Center for Civic Engagement at the Bloustein School. A collaborative effort of university faculty, students, and community development actors, the Center enhances educational opportunities, facilitates innovative research, and engages with communities. The Center conducts community based research and is an important place for the discussion of urban problems and innovative policy and practice solutions. The Center seeks to: enhance dialogue and discussion among communities, government, students, and scholars to increase community development capacity, conduct research on urban problems in partnership with communities to enhance educational opportunities in and outside of the classroom, support the development of innovative responsive public policy and practice, and encourage innovation and entrepreneurship.

The Center can be found online at [rwv.rutgers.edu](http://rwv.rutgers.edu) and on Instagram @voorheescivicengagement

## Advisory Board

An advisory board comprised of Scott Voorhees, Susan Voorhees Hunt, Steven Allard, and Alle Ries guides and supports Center work. The Center draws on the inspiration, passion, brilliance, energy, and creativity of Professor Janet Smith, who served as advisory board chair.

## Center Project Sponsors and Funders

Family of Ralph. W. Voorhees  
Robert Wood Johnson Foundation  
The Louisville Institute  
Urban Studies Foundation  
Robert Schalkenbach Foundation



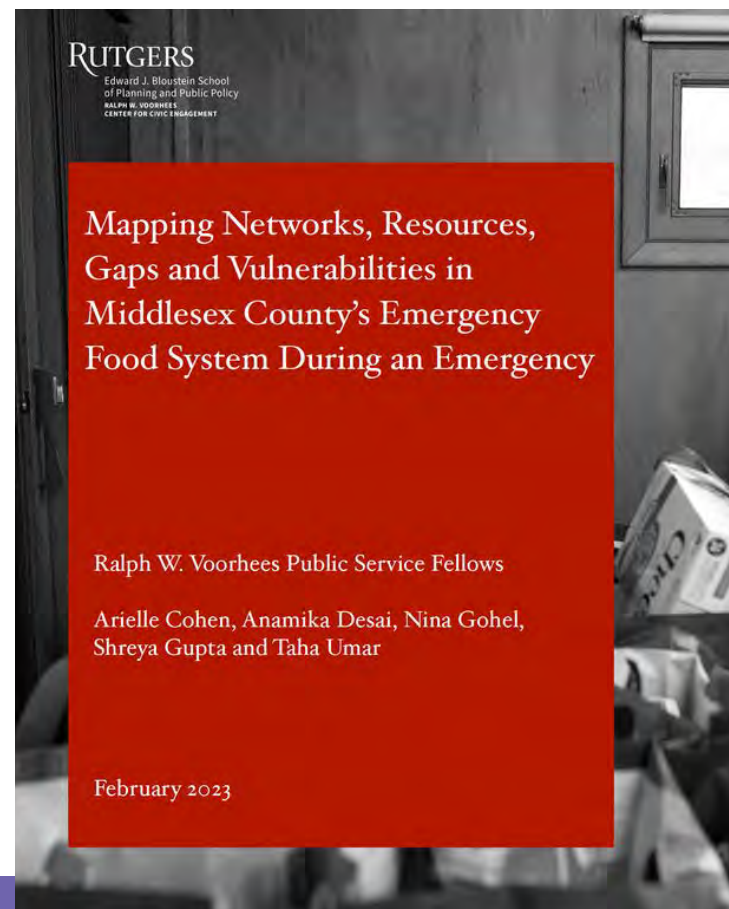
# RALPH W. VOORHEES PUBLIC SERVICE FELLOWS

The Ralph W. Voorhees Public Service Fellowships are awarded annually to students who have chosen to focus their academic pursuits on civically-engaged learning through research projects in community development and planning, community based education, entrepreneurship, housing, public transportation, public health, or public policy.

Five Ralph W. Voorhees Public Service Fellows worked with REPLENISH, the Middlesex County Food Bank, during the Fall 2023 semester to better understand the networks, resources, gaps, and vulnerabilities in the County's emergency food system.

The Fellows found that social networks played very important roles during emergencies. They were critical to aggregating and distributing food and providing information and support. Resources such as refrigeration, transportation and delivery, and volunteers were key sources of strength. They also found that many pantries do not have emergency or succession plans. Creating them would increase resiliency in the emergency food system.

The Ralph W. Voorhees Public Service Fellows worked with REPLENISH. They examined how Middlesex County, New Jersey's emergency food system operates during emergencies



# RALPH W. VOORHEES

## PUBLIC SERVICE FELLOWS



**Arielle Cohen**

Arielle Cohen is a senior in the Honors College pursuing a double major in Public Health and Statistics. She is a member of the Eta Sigma Gamma, the national Health Education honor society. She is involved with Rutgers Hillel, the Rutgers Journal of Bioethics, and the RU Figure Skating Club. She was previously an Interdisciplinary Research Fellow, researching whether one-way or two-way walkways are more effective at preventing the spread of COVID-19. During the Summer of 2022, she was an intern at Regeneron Pharmaceuticals in IT.



**Anamika Desai**

Anamika Desai is a Public Health major and Statistics minor. She participated in the MBS Summer 2022 Externship Exchange program. As a volunteer with Special Olympics New Jersey (SONJ), she participated in a study that investigated the effects of strider bike use on motor skills and balance in children with special needs and won the West Windsor Bicycle and Pedestrian Alliance Scholarship. During the Summer of 2022, she analyzed data related to members of Congress' social media posts about politics and health and climate policy.



**Nina Gohel**

Nina Gohel is a senior studying Political Science and Planning and Public Policy, with minors in Economics and Philosophy, and a certification in PPE (Philosophy, Politics, and Economics). Nina was Student Body Vice-President, an elected representative to the Executive Board of the Association of Big 10 Students and a member of the Rutgers Board of Trustees and the President's Student Advisory Committee. Nina also worked with the International Leadership Foundation, US Environmental Protection Agency, and US Department of the Interior to increase the representation of AAPI youth in government.



# RALPH W. VOORHEES

## PUBLIC SERVICE FELLOWS



**Shreya Gupta**

Shreya Gupta is a senior majoring in Psychology with a minor in the Biological Sciences. She serves in leadership positions with the Douglass Research Advisory Board, STEM Ambassadors, Women in the Health Professions, Red Pine Ambassadors, and Louis Stokes Alliance for Minority Participation (LSAMP). Shreya is a research assistant at the Wilma K. Olson Biopolymer Structures Lab, where she received the LSAMP Research Program Award. She is also a fellow at the Rutgers Brain Institute. Shreya is a recipient of the School of Arts and Sciences Excellence Award, and the Veronique Henriksen Junior Prize in Academic Achievement.



**Taha Umar**

Taha Umar is a senior majoring in Biological Sciences with minors in Psychology and Medical Ethics & Health Policy. He is a Teaching Intern for the Chemistry Department and is a Supplemental Instructor for the Rutgers Office for Diversity and Academic Success in the Sciences. He works as a Peer Mental Health Educator for Rutgers Health Outreach, Promotion, and Education (HOPE). In the Summer of 2022, he was part of the Rutgers Summer Service Internship (RSSI) Initiative where he worked with Interfaith-RISE, a non-profit dedicated to the integration of refugees across NJ.



# RWV CENTER TEAM

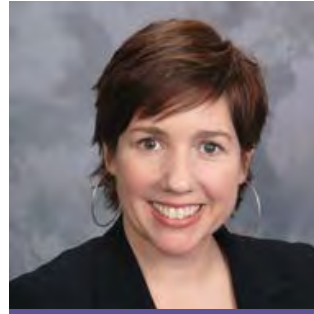
## Center Staff and Faculty Affiliates



**Bernadette Baird-Zars**  
Assistant Professor



**Yen-Tyng Chen**  
Assistant Professor



**Cara Cuite**  
Assistant Professor



**James DeFilippis**  
Professor



**Shiloh Deitz**  
Post Doctoral Researcher



**Nadia Mian**  
Senior Program Director



**Kathe Newman**  
Professor and Director



**Will Payne**  
Assistant Professor



**Ronald Quincy**  
Professor of Practice



**Andrea Restrepo-Mieth**  
Assistant Professor



**Eric Seymour**  
Assistant Professor



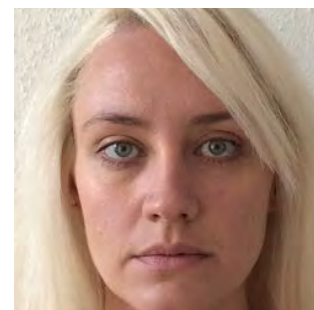
**Mi Shih**  
Associate Professor



**Michael Smart**  
Associate Professor



**Nancy Wolff**  
Distinguished Professor



**Brigitte Zamzow**  
Visiting Faculty



# RWV CENTER TEAM

## Student Research Associates



**Olubori Agboola**

MCRP Candidate 2024



**Kyle Cruz**

MCRP Candidate 2023



**Esther Colon**

RISE Fellow 2022



**Erica Copeland**

MCRP Candidate 2023



**Mila Hamilton**

MCRP Candidate 2023



**Wael Kanj**

MCRP Candidate 2023



**Lauren Nolan**

Doctoral Candidate



**Smriti Singh**

MCRP Candidate 2023



**John Fidel Klarke  
Smith**

MCRP Candidate 2023

# STUDENT RESEARCHER PROFILES

## **OLUBORI AGBOOLA** **MCRP CANDIDATE**



I am pursuing an MCRP degree with a concentration in housing and community development because I am interested in understanding the relationship between affordable housing and food security among lower-income households. Some of my research interests include understanding the influence of cultural and religious affinities between food pantries and immigrant communities. My research with the Voorhees Center focused on mapping networks, resources, gaps, and vulnerabilities in the Middlesex County Food Bank's emergency food system to inform its strategic plan. I am also working with the NJSOARH team on rental affordability in New Jersey. Before coming to the United States, I worked as a research volunteer at the Lagos Food Bank Initiative creating sustainable systems to combat hunger and poverty among vulnerable communities in Lagos State, Nigeria. I also worked on research that involved understanding community identity and housing conditions among rural coastal communities in Lagos, Nigeria. It is my dream to work with the United Nations to ensure sustainable cities and neighborhoods.



## SHILOH DEITZ

### POSTDOCTORAL RESEARCHER

1. Tell me about yourself. What made you interested in the NJSOARH project?

I earned my PhD in Geography from the University of Oregon in the Spring of 2021 where my work centered on data ethics and infrastructural inequality/insecurity. Post-graduation, I took a position as Community Data Coordinator for the Spokane Public Library and City of Spokane. In that position, I worked to bring usable (and open) civic data to the community and develop data governance and ethics policies. My work at Rutgers allows me to refine my interests and experience in open data, data ethics, and infrastructural inequality or insecurity in the United States. Our team has a diverse set of skills and perspectives on the world which makes the project exciting.



2. Tell me about the work you're doing with NJSOARH?

I have the privilege of working with Drs. Kathe Newman, Eric Seymour, and Will Payne on a project analyzing the State of Affordable Rental Housing in New Jersey. Specifically, my work has focused on cleaning and correcting federal administrative datasets on affordable housing. These datasets are a vital national resource and open to the public but contain a series of spatial and substantive limitations or inaccuracies that we are working to correct.

3. How will this work help others who are working on affordable housing in New Jersey?

The methodologies we have developed for correcting these datasets will be replicable for other researchers and practitioners who draw from these data. What's more, these data will allow us to more accurately assess the landscape of affordable housing in New Jersey – a resource which is increasingly insecure in municipalities across the United States.



## JOHN FIDEL CLARKE SMITH

### MCRP CANDIDATE



My motivation to pursue the MCRP is to weave my experiences working as a unionized construction carpenter and co-founder of two arts and activist spaces into a career in urban planning and community development. My ideal practice would combine elements of organizing, placemaking, community engagement, and economic development. My extracurricular activities at Bloustein reflects the practice I'm trying to manifest – from cofounding the Bloustein Social Justice Committee; advocating for community reinvestment policy as BGSA Senator; advising on a national reinvestment policy for the AAUP-AFT; to organizing with the same union to win an equitable collective bargaining agreement with the Rutgers administration.

Projects I've contributed to at the Voorhees Center have been foundational in this career transition.

Interviewing over 100 affordable housing professionals across the state of New Jersey alongside Professors Kathe Newman & Eric Seymour on the NJSOARH project has given me superpowers in note-taking, facilitation, and interviewing. Writing an American-wide shared equity housing landscape analysis under James DeFilippis with Erica Copeland, Mila Hamilton, and Celeste Royo, I'm walking away with an appreciation for the highly collaborative nature of such a project as well as the complex factors that support healthy ecosystems for certain forms of housing tenure and ownership.

These experiences inform the work I'm currently undertaking and what I hope to move towards post-graduation. Currently I'm developing property owner engagement strategies and tools for CP Planning's "Redevelopment Roadmap to Confront Systemic Racism" project in Ontario, Canada whose goal is to prevent TOD related displacement in racialized communities by supporting ADU or "Missing middle" development. Commitment to community impact, equitable benefits and anti-displacement are values I hold as I move towards short term goals gaining experience in the real estate development sector - values that moved a younger, rougher, carpenter John to pursue the MCRP in the first place.

# RESEARCH HIGHLIGHTS

## Mapping Networks, Resources, Gaps and Vulnerabilities in Middlesex County's Emergency Food System during an Emergency

The Ralph W. Voorhees Public Service Fellows worked with REPLENISH, the Middlesex County Food Bank, to better understand the networks, resources, gaps, and vulnerabilities in the County's emergency food system. The objective was to understand how emergencies affect food pantries and food banks to ensure that people can access food in a crisis. Through interviews, observations, and archival research, the Fellows found that 1) social networks are critical to aggregate and distribute food and to provide information and support; 2) resources such as refrigeration, transportation, delivery, and volunteers are key sources of strength, and 3) many pantries do not have emergency or succession plans.



## Faith-Based Development

Nadia Mian's research on faith-based affordable housing development examines how houses of worship are advocating for and changing regulatory barriers to development. As houses of worship transition their properties to other uses they challenge restrictive land use regulations. Some states and municipalities have responded by reducing or removing parking requirements and providing density bonuses for faith-based affordable housing developments. Some cities have also created capacity building programs for mission-focused real estate development to better understand challenges faced by houses of worship in the development process.





## NJSOARH

NJSOARH seeks to better understand the state of affordable rental housing in New Jersey. To do this, it's building an affordable housing data infrastructure and conducting interviews with those who understand housing insecurity best across New Jersey. Shiloh Deitz, a postdoctoral fellow, joined the team in Fall 2022. The team has produced reports documenting the state of rent control in New Jersey, is building a set of county reports that provide an overview of affordable housing in each municipality within each county, and produced a statewide overview of the number of units within a set of federal programs. The team uses innovative quantitative and spatial methods to identify units that receive multiple forms of subsidy producing a more accurate estimate of the number of assisted units in NJ and in communities. The team has presented initial work at a set of conferences and is launching in-depth field work in seven cities this summer.

## Investigation of Investor Residential Property Acquisition in NJ

The Robert Schalkenbach Foundation is supporting an "Investigation of Investor Residential Property Acquisition in NJ," a 12-month project related to the RWJF-supported project, NJSOARH. Eric Seymour, Will Payne, and Kathe Newman, with PhD student Lauren Nolan, will investigate patterns of investor acquisition and ownership of residential properties, with a focus on rental properties, with specific attention to a sample of municipalities across NJ representing a variety of geographic regions and housing market conditions. This project will shed light on the types of neighborhoods and communities that are experiencing investor activity, the housing and financial market conditions shaping this investment, the characteristics of these investors, and the implications for working-class households and especially households of color.





# FACULTY PROFILES

15

The RWV Center welcomed five new faculty affiliates this year: Bernadette Baird-Zars, Yen-Tyng Chen, Andrea Restrepo-Mieth, Michael Smart and Nancy Wolff. The faculty profile highlights the incredible work of two of the Center's new affiliates.



**YEN-TYNG CHEN**

I'm a social epidemiologist and behavior scientist who focuses on the impacts of structural-level characteristics on health and health behaviors among under-resourced and marginalized populations. My research focuses on HIV prevention and intervention outcomes of young black sexual minority men in Chicago, IL. I'm currently working on an internal pilot grant to create diverse measures for structural racism nationally.



**ANDREA RESTREPO-MIETH**

My research examines the emergence and institutionalization of environmentally sustainable and socially progressive planning practices in cities in the Global South, the politics of planning for water services, and grassroots involvement in urban governance. I'm the faculty lead for the climate change adaptation project of the Galápagos Education and Research Alliance (GERA) and am conducting community-engaged research in Ecuador.

# PUBLICATIONS

## Ralph W. Voorhees Public Service Fellows Reports

Voorhees Fellows: Arielle Cohen, Anamika Desai, Nina Gohel, Shreya Gupta and Taha Umar. 2022. Mapping Networks, Resources, Gaps and Vulnerabilities in Middlesex County's Emergency Food System during an Emergency.

## Academic Articles

Ahamed, S., Caggiano, H. Shwom, R., Cuite, C.L., Schelly, C., Floress, K., Lytle, W., Watkins, D., Wallace, C., and Cook, R. 2023. "Being able to work has kept our life fairly constant: Reconciling social practice models to assess the impact of (infra)structural inequities on household wellbeing during the COVID-19 pandemic." *Environmental Research: Infrastructure and Sustainability*, 3 (1).

Aizpurua E, Caravaca-Sánchez F, Wolff N. 2023. "Patterns of Childhood Adversities and Their Associations With Adult Victimization Among Incarcerated Men and Women in Spanish Prisons." *International Journal of Offender Therapy and Comparative Criminology*. 67(1):89-104.

Asher, Tom; Baird-Zars, Bernadette; Bou Akar, Hiba; Fawaz, Mona, Harb, Mona; Torres, Mario; Yazigi, Serge. 2023. "Rebuilding Beirut: A roadmap for an equitable post-disaster response". Columbia World Projects.

Baird-Zars, Bernadette. 2023. "Making the ropes: How daily practices in a booming periurban municipality become durable 'gray' institutions shaping land use." *Land Use Policy* 129

Brown, Ann, Nicholas J. Klein, Michael J. Smart, and Amanda Howell. 2022. "Buying Access One Trip at a Time: Lower-Income Households and Ride-Hail." *Journal of the American Planning Association* 88(4), 495-507.

Caggiano, H; Sonya Ahamed; William Lytle; Chelsea Schelly; Kristin Floress; Cuite, C.L.; Rachael Shwom. 2023. "Green roles at home: Exploring the impact of household social dynamic processes on consumption at the food-energy-water (FEW) nexus." *Journal of Environmental Studies and Sciences*. <https://doi.org/10.1007/s13412-023-00824-x>

Caravaca-Sánchez F, Aizpurua E, Wolff N. 2022. "The Prevalence of Prison-based Physical and Sexual Victimization in Males and Females: A Systematic Review and Meta-Analysis." *Trauma Violence Abuse*. Online First.

Cuite, C.L., Dietz, K., Bates, L. & Brescia, S. 2023. "Changes in food security status during undergraduate enrollment." *Journal of Nutrition Education and Behavior* 55(2). 86-95.

Hagedorn-Hatfield, R.L., Qamar, Z., Richards, R., Patton-López, M.M., Savoie-Roskos, M.R., Heying, E.K., Landry, M.J., Mann, G., Vogelzang, J.L., OoNorasak, K., Cuite, C.L. & Hood, L.B. 2023. "Barriers and facilitators to implementing and sustaining campus food insecurity initiatives." *Studies in Higher Education*.

King, David A., Michael Manville, and Michael J. Smart. 2022. "The Poverty of the Carless." *Journal of Planning Education and Research* 42(3), 464-481.

Klein, Nicholas, Rounaq Basu, and Michael J. Smart. 2023. "In the driver's seat: Pathways to automobile ownership for lower-income households in the United States" *Transportation Research Interdisciplinary Perspectives*.

Klein, Nicholas, Rounaq Basu, and Michael J. Smart. (2023, forthcoming) "Transitions into and out of Car Ownership Among Low-Income Households in the United States." *Journal of Planning Education and Research*.

Kumar, P, Caggiano, H., Cuite, C.L., Shwom, R., Felder, F. 2023. "Analyzing spillovers from food, energy, and water conservation behaviors using insights from systems perspective." *Behavioral Public Policy*.

Lake, Robert. 2023. "Value Magic." *EPA: Economy and Space*, online first.

Landry, M., Savoie-Roskos, M., Richards, R., Qamar, Z., Hood, L., Vogelzang, J., OoNorasak, K., Cuite, C.L., Heying, C., Hagedorn-Hatfield, R. (in press). Advancing College Student Food Security: Priority Research Gaps. *Nutrition Research Reviews*.

Restrepo-Mieth, Andrea. 2023. "Learning from mistakes: Reflective planning, simple junctures, and institutional change." *Planing Theory & Practice* 24(1): 46-63.

Seymour, E., & Shelton, T. 2023. "How Private Equity Landlords Prey on Working-Class Communities of Color." *New Labor Forum* 32(2): 54-63.



Seymour, Eric. 2022a. "Corporate Landlords and Pandemic and Prepandemic Evictions in Las Vegas." *Housing Policy Debate*, online first.

Seymour, Eric. 2022b. "The impact of current and former REOs across owner types: the case of Detroit." *Housing Studies*, online first.

Shih, Mi and Ying-Hui Chiang. 2022. "A politically less contested and financially more calculable urban future: Density techniques and heightened land commodification in Taiwan." *EPA: Economy and Space*, online first.

Wolff, N., Aizpurua, E., & Peng, D. "Violence against incarcerated men: Predicting risk through the lens of childhood adversity." *Trauma, Violence, & Abuse*, (forthcoming).

## **Other**

Mian, Nadia. 2023a. "Transforming Empty Churches Into Affordable Housing Takes More Than a Leap of Faith." *Planning Magazine*.

Mian, Nadia. 2023b. "Black Congregations are Developing Housing on Church Land." *Shelterforce Magazine*.



# COLLABORATIONS



## HOUSING AND HEALTH EQUITY CLUSTER

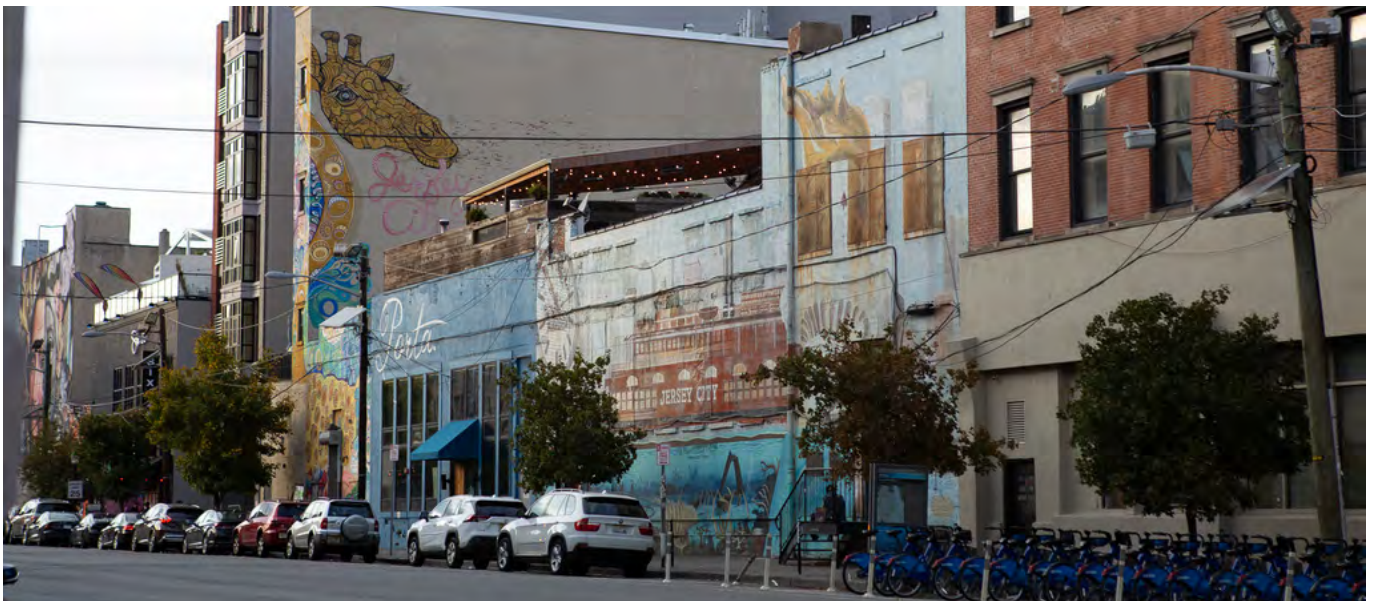
The Ralph W. Voorhees Center is participating in the University's Housing and Health Equity Cluster working collaboratively with colleagues, programs, and research centers across Rutgers. The team is adding a postdoctoral associate and pursuing collaborative grant funding.

## REACH HOUSING AND FOOD INSECURITY TABLE

The Ralph W. Voorhees Center is participating in the Rutgers Equity Alliance for Community Health's (REACH) housing table where Kathe Newman is lead. The Table is working on a housing policy document and planning a New Jersey housing conference. Faculty affiliate, Cara Cuite, is leading the REACH food security Table.

## INCLUSIVE HEALTHY COMMUNITIES

This project brings together Jeanne Herb and the Inclusive Healthy Communities grant from the Division of Disability Services and the RWV Center to better understand the housing needs of individuals with disabilities.



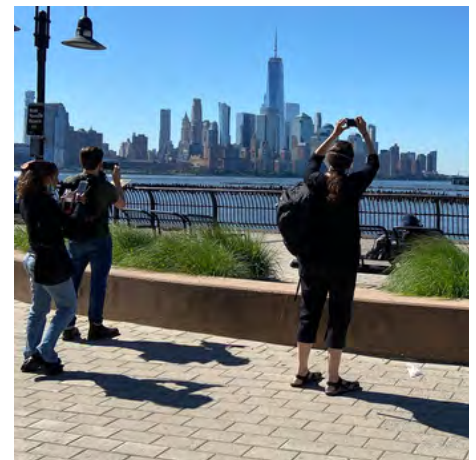
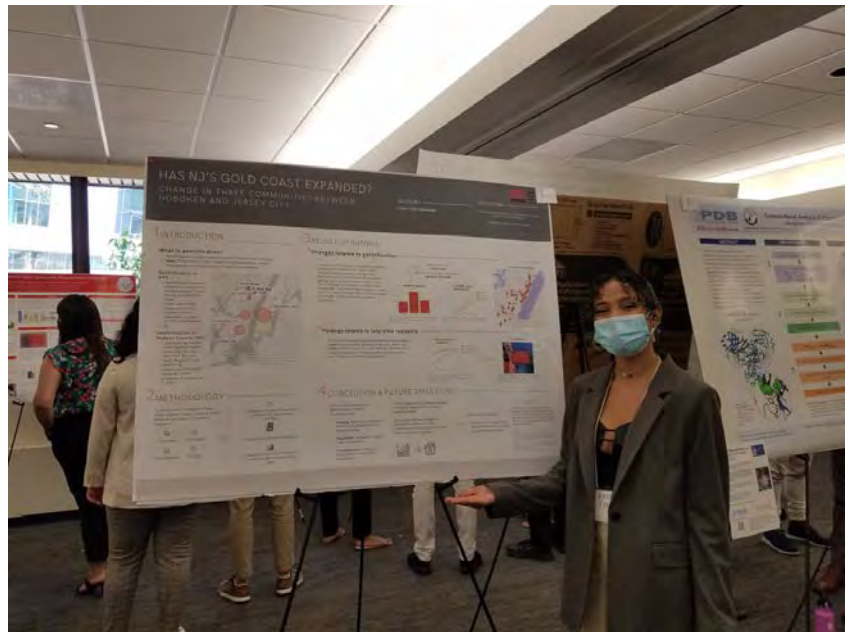


# RWV CENTER EVENTS

20

## HUDSON COUNTY FIELD TRIP

In July 2022, the RWV Center organized a field trip with undergraduate RISE Fellow, Esther Colon, faculty affiliate, Eric Seymour and Fulbright Fellow Naomi Uchida, and staff, Kathe Newman and Nadia Mian to Hudson County to explore housing and gentrification on the Gold Coast. Esther Colon later presented her research on gentrification in Hudson County in August at Rutgers.





## NEGOTIATING SOCIAL FUTURES SEMINAR SERIES

Profs. Mi Shih and Kathe Newman received an Urban Studies Foundation Seminar Series Award Grant (USF-SSA-210213) in 2021 to explore the politics of land development and value capture. Through three in-person and virtual conferences, the seminar series attracted an international group of panelists and provided early career training. Hosted by Profs. Mi Shih and Kathe Newman, the Negotiating Social Futures seminar series kicked off with a two-day virtual paper conference on September 23-24, 2021 that drew an international group of more than 90 who participated as panelists, discussants, and attendees. Following the formal conference, the team hosted an early career training opportunity. The series then offered a virtual mini-workshop on case study methodologies in January 2022 for scholars participating in the conference in September 2022.





**JULY 2022**

## **The Social Values of Urban Land Development: Collective Inquiries and Practices. Organized with the Lab for Integrated Socio-Spatial Science and Information**

Profs. Mi Shih and Kathe Newman received an Urban Studies Foundation Knowledge Mobilization award in 2021. The objective of this funding was to transform critical urban scholarship to social engagement actions in Taiwan. The local partners of this project included the Lab for Integrated Socio-Spatial Science and Information (LISSI) at National Chengchi University and the Organization of Urban Re-s (OURs). OURs is an influential NGO in Taiwan that has been involved in urban policy making and civic engagement for decades. Collaborating with Dr. Yinghui Chiang at LISSI and Mr. Yang-Kai Peng, Secretary General of OURs, we organized a series of three virtual events on July 30 and 31, 2022. The first was a public talk and the second two were discussion panels. Dr. Shih and Dr. Chiang gave a presentation titled Land's Social Values: What Kinds of Markets and Urban Futures Have Density Tools Created? That was based on their research on the politics of land development and value capture. Each of the discussion panels was comprised of four scholars and practitioners who have long paid close attention to issues related to land development regulatory tools and affordable housing. Each event attracted more than 120 participants and featured a lively Q&A session.





## SEPTEMBER 2022

### Negotiating Social Futures: The Politics of Land Development and Value Capture During and After the COVID Pandemic

The RWV Center welcomed scholars from across the world to the Negotiating Social Futures conference held in-person at the Bloustein School on September 22-23, 2022. Panelists presented case studies from China, Brazil, Hong Kong, Taiwan, Canada, the United States and engaged in discussions around land development, value capture, value conflicts, participatory democracy and the city's social futures. Dean Stuart Shapiro kicked off the two day in-person case study conference that included three paper panels and a keynote address by Professor Sai Balakrishnan at the University of California Berkeley, author of *Shareholder Cities: Land Transformation Along Urban Corridors in India* (2019, University of Pennsylvania Press).

Professors Shih and Newman are working on an edited volume of case studies from this conference and an edited theme issue which is under review at an academic journal.

## MAY 2023

### RWV Center Networking and Collaboration Event

The RWV Center hosted a networking and collaboration event with faculty affiliates, students, and staff. The event featured lively conversation, home-baked goods, and the opportunity for everyone involved with the Center to exchange ideas and get to know one another.







# CONFERENCE PRESENTATIONS

## **Monarch Housing – Housing as a Human Right Conference Princeton, New Jersey**

**October 6, 2022**

Eric Seymour and Kathe Newman presented initial work about the State of Affordable Housing in New Jersey and engaged in fruitful conversation.

## **Association of Collegiate Schools of Planning Toronto, Ontario**

**November 3-5, 2022**

RWV Center staff and faculty affiliates presented their research at the Association of Collegiate Schools of Planning Conference (ACSP) in Toronto.

In James DeFilippis' talk entitled, "Social Justice and the Immigrant City," he argued against the tendencies to both universalize the meanings of justice, and essentialize the meanings of group identity.

Lauren Nolan's research explored Amazon's expansion outside Chicago. The article, entitled, "Fulfillment Prophecy: The Politics of Amazon's Expansion in Greater Chicagoland," considers the politics and processes surrounding Amazon's development of multiple large-scale fulfillment centers in Chicago's south suburbs.



Will Payne and Alexander Tarr's research entitled "Beyond Advantage: How Silicon Valley Remade Massachusetts' (Sub)Urban Technology Landscape in its own Image," uses a combination of archival, visual, and spatial analytic methods to show how successful hardware-centric Silicon Valley firms expanded back into New England.

Andrea Restrepo-Mieth's paper, "Improving water and sanitation affordability through lifeline programs: subnational initiatives in Colombia," used mixed methods, she gathered data from ten Colombian cities to better understand the role of social movements, civil society organizations, and planners in pushing municipalities to adopt water and sanitation lifeline programs.

Mi Shih's research conducted with Fang-Cheng Lin, Min-Jay Kang, and John C.K. Liu from the National Taiwan University examines the politics of informal housing and public land in Taiwan. The paper entitled "Constructing Value Through Action: Negotiating the Politics of Informal Housing and Public Land," is a case study based on ethnographic fieldwork of an informal settlement called Treasure Hill in Taipei, Taiwan.

Eric Seymour's paper entitled, "Corporate Landlords and Pandemic and Pre-Pandemic Evictions in Las Vegas," examines trends in evictions and filings associated with two particular submarkets, extended-stay and single-family rentals, through an analysis of case-level data covering the Las Vegas metropolitan area.

## **Future of Church Properties Conference**

### **South Bend, Indiana**

**November 7-9, 2022**

Nadia Mian presented research on faith-based affordable housing at the Fitzgerald Institute for Real Estate's Future of Church Property Conference at the University of Notre Dame. She talked about the different ways in which houses of worship across the country are challenging and changing zoning regulations to build affordable housing.





## National League of Cities Kansas City, Missouri

November 19, 2022

Eric Seymour spoke at the National League of Cities (NLC) on a panel entitled, "Corporate Buyout of Housing: How It's Affecting Your City and What You Can Do." Professor Seymour spoke about differences between the types of corporate investors in single-family rentals after the foreclosure crisis, from the largest and most well-known companies acquiring and renting homes in high-amenity suburbs, to the relatively smaller but equally important corporate landlords buying homes in central-city and inner-ring suburban neighborhoods, often in communities of color.



## American Association of Geographers Denver, Colorado

March 23-27, 2023

Eric Seymour, Will Payne, Shiloh Deitz and Kathe Newman's panel "Using Administrative Data to Better Understand the State of Affordable Rental Housing," demonstrates the importance of gathering, cleaning, and linking information about housing nested within administrative datasets to better understand some of the challenges facing affordable rental housing today.





Will Payne organized and chaired a panel entitled, “Experimental Digital Mapping // Back to the Future // 1: Theory. This session is a showcase of new experiments in digital spatial representation beyond pin maps and polygons as well as excavation of historicized methods.

Eric Seymour presented his work on a panel that discusses “The Housing Crisis Beyond the Coasts.” Eric’s research examines the recent geography of the largest active single-family landlords in the US in a sample of urban counties reflecting different housing market dynamics, including the core counties of the Atlanta, Houston, and Las Vegas metro areas and Southeast Ohio.

## **American Planning Association Philadelphia, Pennsylvania**

**April 1-4, 2023**

Nadia Mian presented on a panel about redeveloping houses of worship. The presentation considers steps that faith institutions, municipalities, and community organizations can take to embrace failing houses of worship, promote innovative mixed use, and return them to productive community use.

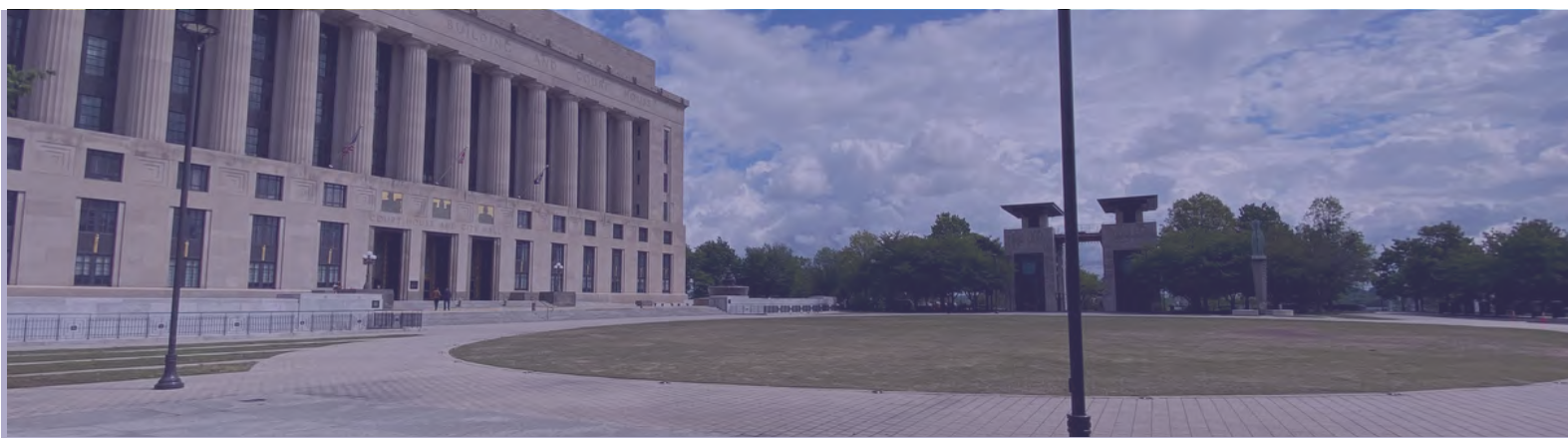
## **Urban Affairs Association Nashville, Tennessee**

**April 26-29, 2023**

James DeFilippis’ colloquy entitled “Understanding the New Urban Political Economies” discusses how we can understand immigrant labor markets using the language of Racial Capitalism, and the implications of that endeavor for our understanding of urban theory more generally.

Shiloh Deitz, Lauren Nolan, Kathe Newman and Eric Seymour presented on a panel entitled “Using Administrative Data to Better Understand the State of Affordable Rental Housing.” This panel included a set of papers that individually and collectively demonstrated the importance of gathering, cleaning, and linking informational about housing nested within administrative datasets to better understand some of the challenges facing affordable rental housing today.



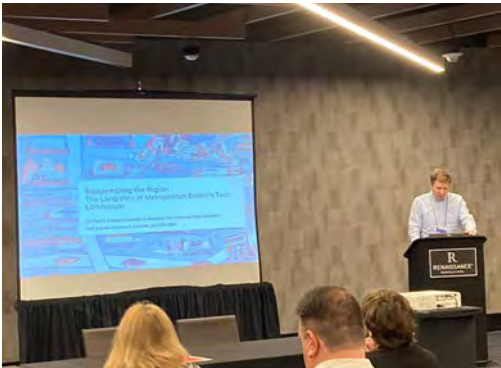


Nadia Mian, along with Richard Reinhard, and Stephanie Velasco discussed faith-based property development. The discussion centered around steps that can be taken by faith institutions, municipalities, and community organizations to embrace failing houses of worship and promote innovative mixed use as a means to return these houses of worship to productive community use.

Kathe Newman's colloquy presentation, in the "Understanding the New Urban Political Economies" panel series, discussed the relationship between financialization and urban change.

Will Payne’s presentation on Boston’s tech landscape used a combination of archival, visual and spatial analytic methods to examine office locations in the Boston-area. The presentation showed how tech companies expanded back into New England because of the concentration of skilled digital labor, as well as the built environment and cultural landscape of suburban technology work.

Andrea Restrepo-Mieth gave a talk on Municipal Capacity, Civil Society, and Climate Change Adaptation: Evidence from Galápagos. She examined how municipalities with limited administrative capacity and low civil society mobilization address growing needs to plan for climate change adaptation.





# RUTGERS

Edward J. Bloustein School  
of Planning and Public Policy

**RALPH W. VOORHEES**  
**CENTER FOR CIVIC ENGAGEMENT**



33 Livingston Avenue, New Brunswick NJ 07901



@voorheescivicengagement



[rwv.rutgers.com](http://rwv.rutgers.com)

