



RUTGERS-NEW BRUNSWICK
Edward J. Bloustein School
of Planning and Public Policy
Ralph W. Voorhees Center for Civic Engagement

Ralph W. Voorhees Center for Civic Engagement

July-December 2025

Biannual Report



Table of Contents

About Us	3
The Voorhees Fellows	8
Team	12
Research Projects	17
Publications	22
Events	24
Activities	28
Conferences	30
Awards	34
Intersections: A Focus on Faculty Affiliate Achievements	36



ABOUT US



About the Ralph W. Voorhees Center for Civic Engagement

In 2011, in honor of Mr. Voorhees' vision, civic engagement, and service contributions, the Voorhees family established the Ralph W. Voorhees Center for Civic Engagement at the Bloustein School. Through a collaborative effort of faculty, students, and community development actors, the Center enhances educational opportunities, facilitates innovative research, and engages with communities. The Center conducts community based research and is an important place for the discussion of urban problems and innovative policy and practice solutions.

The Center seeks to enhance dialogue and discussion among communities, government, students, and scholars, increase community development capacity, conduct research on urban problems, and, in partnership with communities, enhance educational opportunities in and outside of the classroom, support the development of innovative responsive public policy and practice, and encourage innovation and entrepreneurship.

The Center is online at rwv.rutgers.edu and on Instagram @voorheescivicengagement

Advisory Board

An advisory board comprised of Scott Voorhees, Susan Voorhees Hunt, Steven Allard, and Alle Ries guides and supports Center work.

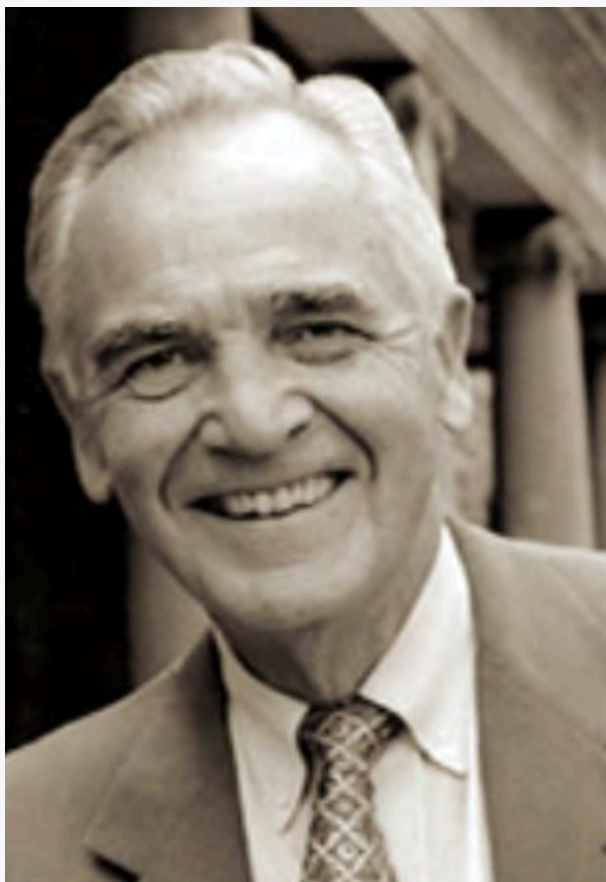
The Center draws on the inspiration, passion, brilliance, energy, and creativity of Professor Janet Smith, who served as advisory board chair.

Center Project Sponsors and Funders

Family of Ralph W. Voorhees
New Jersey State Policy Lab
Urban Studies Foundation
Rutgers Equity Alliance for Community Health (REACH)

Robert Wood Johnson Foundation
Progress & Poverty Institute
The Duke Endowment
Trinity Church Wall Street

About Ralph W. Voorhees



Ralph W. Voorhees was a 1948 graduate of Rutgers University, where he was a member of the Phi Beta Kappa honorary society.

Mr. Voorhees was senior vice president for investments at Paine Weber, served as a member of ASA Holdings Inc.'s Board of Directors, and as chairman of the boards of the United Way of Central New Jersey, Family Counseling Services of Middlesex County, the Robert Wood Johnson University Hospital, and the New Brunswick Cultural Center. At Rutgers, he was chairman of the University Foundation and served on the University Foundation's Board of Overseers.

He was inducted into the Rutgers Hall of Distinguished Alumni and received the Presidential Recognition and the Loyal Son of Rutgers Awards. He served as a member of the Voorhees College Board of Trustees where he received the Keeper of the Flame Award for continuing his family's legacy of supporting the college.

Mr. Voorhees lived in Highland Park, NJ where his activities spanned health, urban renewal, and education and then in New Brunswick. A sterling example of volunteerism and civic engagement at its very best, Mr. Voorhees dedicated many years to service in several areas of university and community life, demonstrating vision, unquestionable altruism, and outstanding success as a philanthropic leader.

Welcome

Ralph W. Voorhees Public Service Fellows



Besan Abusharia

Public Health



Rafael Escalante

*Political Science and
Public Policy*



Dhvani Gandhi

*Cellular Biology and Neuroscience
with a minor in Cognitive Science*



Madison Griffin

*Africana Studies with a minor in Latino
and Hispanic Caribbean Studies*



Tatiana Sarmiento

*Public Policy and Criminal
Justice with a minor in Music*

New Faculty Affiliates and Student Research Associates



Ben Cramer
MCRP Candidate



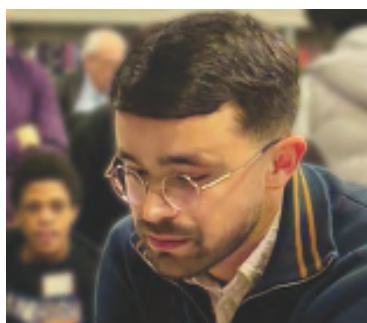
Madison Griffin
Undergraduate



Jyotsna Kumar
MCRP Candidate



Triparnee Kushari
Doctoral Candidate



Kenismael Santiago Pagan
Doctoral Candidate



Ashley Painter
MCRP Candidate



Tiergan Reynolds
MCRP Candidate



Sharanya Sahu
MCRP Candidate



Chat Travieso
Faculty Affiliate



Ahthia Waugh
MCRP Candidate

Mehreen Mian

Business Services Lead



The Voorhees Center extends a very gracious and warm welcome to our new business services lead, Mehreen Mian. Mehreen has a Master's degree in Public Policy from the Bloustein School, and a Bachelor of Science degree in Nutritional Science from the School of Environmental and Biological Sciences, Rutgers University.

She previously worked as a Business Manager at the Bloustein Center for Survey Research and as a Program Coordinator at the Clement A. Price Institute, Rutgers University-Newark.



THE VOORHEES FELLOWS





Voorhees Fellows Project

The State of Food Pantries in New Brunswick, NJ

The 2025–2026 Ralph W. Voorhees Public Service Fellows worked in partnership with the Department of Human and Community Services in the City of New Brunswick, New Jersey to gather information about the state of food pantries that serve New Brunswick residents.

The Fellows read literature and news about the state of emergency food assistance, conducted semi-structured interviews with food pantries and other food security experts, toured REPLENISH, Middlesex County’s food bank, and the Franklin Food Bank, and visited Unity Square Community Center.

They integrated what they learned into a report about the state of food pantries in New Brunswick and presented their findings to community partners.

After meeting with City officials at New Brunswick City Hall to learn more about the project, the Fellows took a community food security-focused tour of New Brunswick with Claudio Mir, Senior Program Coordinator for Community Outreach at the Rutgers Collaborative Center for Community Engagement.



The Fellows later visited REPLENISH, the Middlesex County food bank to learn how food banks aggregate and distribute food, particularly to food pantries in New Brunswick. Jennifer Apostol, the Director of REPLENISH, sat down with the Fellows to talk about food security and then gave them a tour of the facilities and a peak into the new freezer and storage space.





The Fellows also visited a local food pantry, Unity Square Community Center in New Brunswick. Fellows met with Michelle Gil, the Director of Community Outreach, to learn more about how the pantry meets the needs of the community by offering a variety of cultural foods and programs.



A trip to the Franklin Food Bank in Somerset, New Jersey illustrated how a food bank and pantry that centers dignity and respect operates. On a tour led by Allie O'Brien, Director of Development, and joined by Executive Director, Derek Smith, the Fellows learned more about how this hybrid pantry/food bank serves the community in Somerset and beyond.





RWV CENTER TEAM



RWV Center Staff

Kathe Newman

Professor and Director

Bloustein - Urban
Planning and Policy
Development

Nadia Mian

Senior Program Director
and Lecturer

Bloustein - Housing,
Faith-based property
development,
placemaking and
community development

Mehreen Mian

Business Services Lead

Bloustein - Ralph W.
Voorhees Center for
Civic Engagement

Faculty Affiliates

Juan Ayala

Associate Professor of
Practice

Bloustein - Urban
Planning and Policy
Development

Bernadette Baird-Zars

Assistant Professor

Bloustein - Urban
Planning and Policy
Development

Hector Blanco

Assistant Professor

School of Arts and
Sciences - Economics

Yen-Tyng Chen

Assistant Professor

Bloustein - Public Health

Cara Cuite

Associate Extension
Specialist and
Undergraduate
Program Director

SEBS - Human Ecology

James DeFilippis

Professor

Bloustein - Urban
Planning and Policy
Development

Carmelo Ignaccolo

Assistant Professor

Bloustein - Urban
Planning and Policy
Development

Robin Leichenko

Dean of Social and
Behavioral Sciences
and Distinguished
Professor

School of Arts and
Sciences - Geography

Katharine Nelson

Assistant Director

Rutgers Newark -
Center on Law,
Inequality and
Metropolitan Equity
(CLIME)

Emily Parker

Assistant Professor

Bloustein - Public Policy
and Public Health

Will Payne

Assistant Professor

Bloustein - Urban
Planning and Policy
Development and Public
Informatics

Ronald Quincy

Professor of
Professional Practice

Bloustein - Health
Administration, Public
Policy, Urban Planning

Faculty Affiliates



Andrea Restrepo- Mieth

Assistant Professor

Bloustein - Urban
Planning and Policy
Development



Jovanna Rosen

Assistant Professor

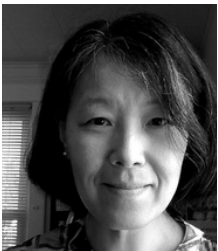
Rutgers Camden -
Public Policy



Eric Seymour

Associate Professor

Bloustein - Urban
Planning and Policy
Development



Mi Shih

Associate Professor

Bloustein - Urban
Planning and Policy
Development



Michael Smart

Associate Professor
and Doctoral
Program Director

Bloustein - Urban
Planning and Policy
Development



Emmy Tiderington

Associate Professor

School of Social Work



Chat Travieso

Artist and Researcher

Mason Gross School for
the Arts - Art and Design
Tepper Chair



Dan Treglia

Instructor

Institute for Health,
Health Care Policy and
Aging Research and
Department of Family
Medicine



David Troutt

Distinguished Professor
and Director

Rutgers Law School -
Newark and Center on
Law, Inequality and
Metropolitan Equity
(CLiME)



Shar Williams

Assistant Professor

Bloustein - Public Health
and Public Policy



Nancy Wolff

Distinguished Professor
and Director

Bloustein - Public Health
and Center for Survey
Research

Student Research Associates and Affiliates



Ben Cramer
MCRP Candidate



Bridget Fisher
Doctoral Candidate



Sophia Fox-Dichter
Doctoral Candidate



Madison Griffin
Undergraduate



Jyotsna Kumar
MCRP Candidate



Triparnee Kushari
Doctoral Candidate



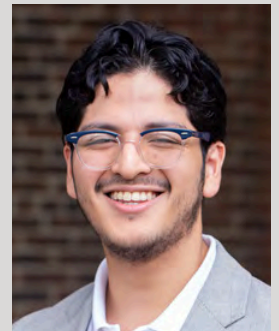
Soo Yeon Lim
Doctoral Candidate



**Kenismael
Santiago Pagan**
Doctoral Candidate



Ashley Painter
MCRP Candidate



Marcelo Remond
Civil Engineer Grad



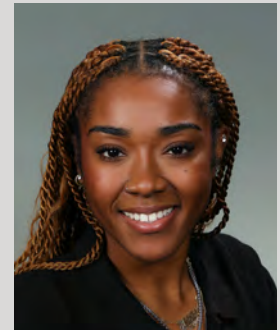
Tiergan Reynolds
MCRP Candidate



Sharanya Sahu
MCRP Candidate



Yu Wang
Doctoral Candidate



Ahthia Waugh
MCRP Candidate

RWV Center Staff Profile

Mehreen Mian, Business Services Lead



Mehreen joined the Ralph W. Voorhees Center for Civic Engagement team as a Business Assistant this Fall.

Mehreen is passionate about access to education and enjoys learning about finance in a university setting. She is excited to get started in her new role and to contribute to the excellent work and impressive legacy of the Center.

Mehreen grew up in Pakistan, moved to New Jersey in High School, and then attended Rutgers University for her graduate and undergraduate studies. She has a Master's degree in Public Policy from the Bloustein School and a Bachelor of Science degree in Nutritional Science.

She previously worked as a Business Manager at the Bloustein Center for Survey Research and as a Program Coordinator at the Clement A. Price Institute at Rutgers University-Newark. She has worked closely with center directors, staff, and university officials to plan, secure funding for, and deliver community programs.



RWV CENTER RESEARCH PROJECTS

Faith-based Affordable Housing Database

Jyotsna Kumar, Sharanya Sahu, and Marcelo Remond are working with Dr. Mian on building a publicly accessible online database that catalogues affordable housing building on faith property in the last decade. So far, the team has documented 200 properties.



Home Mortgage Lending in Camden, New Jersey

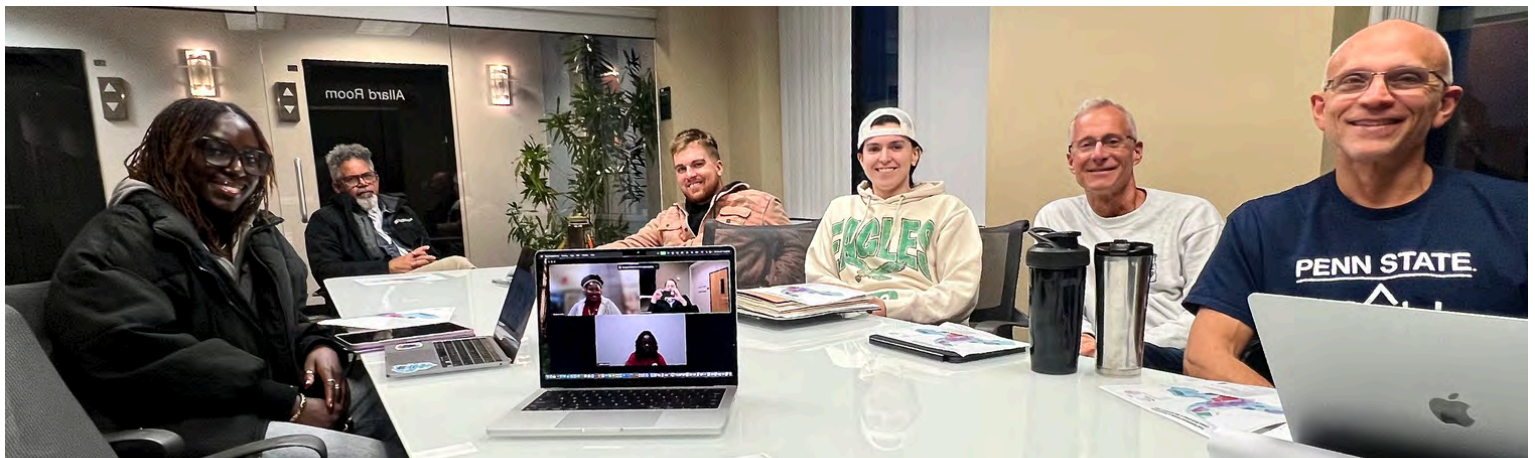


Katharine Nelson (Rutgers University - CLiME), Kathe Newman, Lauren Nolan, and Eric Seymour are studying access to home mortgages in Camden in partnership with St. Joseph's Carpenter Society and with funding from the Rutgers Equity Alliance for Community Health (REACH).

The team analyzed Home Mortgage Disclosure Act data and conducted interviews to better understand access to quality home mortgage credit and patterns of home purchase, refinance, improvement mortgage originations and denials in the period 2018–2022. The team shared initial findings with community partners and is completing their report.

Emergency Food System in New Brunswick, New Jersey

Tiergan Reynolds and Ben Cramer are working with a variety of New Brunswick partners alongside the Rutgers Collaborative Center for Community Engagement's Advancing Community Development interns and the Ralph W. Voorhees Public Service Fellows to produce maps and analyze data to enable community partners to better reveal food pantry coverage in New Brunswick.



NJSOARH

Continuing their work on the state of affordable housing in New Jersey, Eric Seymour, Will Payne, and Kathe Newman are drafting 7 case studies that integrate data about affordable housing into their city contexts to better reveal the state of housing security in those communities.



Student Housing in New Brunswick, New Jersey

Ahthia Waugh is researching privately owned student housing in New Brunswick. In this exploratory project she is documenting the ways that landlords make rooms and apartments available, the process and associated costs of locating housing, and whether and how these processes are covered by existing regulations.



Trends in Investor Acquisition of Residential Properties in New Jersey

With support from the New Jersey State Policy Lab, Eric Seymour and Will Payne completed a statewide analysis of corporate ownership of small residential properties, expanding on their research with Kathe Newman on seven New Jersey municipalities. This work is allied with the broader New Jersey State of Affordable Rental Housing (NJSOARH) project and both informs and draws from the insights of that research. Using historical tax parcel data from 2012 to 2022, the team tracked how 1-4 unit residential properties transitioned between owner-occupancy, non-corporate investor ownership, and corporate ownership across all of New Jersey's municipalities, examining more than 2 million property records. The report examined portfolio sizes, ranging from single-property owners to large multi-property portfolios, as well as where owners' tax bills were sent within and outside New Jersey. The research provides a fact base for understanding these ownership patterns and informing further study of their effects.

Persistent Barriers to Integration in 'High-Opportunity' Areas

This fall, Assistant Professor Bernadette Baird-Zars and her collaborators presented work at the American Collegiate Schools of Planning and the Association for Public Policy and Management on how residents of subsidized housing in 'opportunity' areas often face persistent barriers to meaningful access to 'better' services and amenities. Four case studies detail the persistence and prevalence of barriers from the physical environment, cost and school systems, among others, with larger implications for understanding equity and integration. Over the summer, four Bloustein undergrad and master students continued work for a few hours each week, and two undergraduates continued this fall through independent studies. The team, co-led by Dr. Wenfei Xu at University of California at Santa Barbara, will continue to look for funding to support more students in this ambitious work.

Flash Floods in New Jersey and Ingredients of Community-led Adaptation Processes

Sean Lamb, a first year MRCP student, and recent Bloustein UPD graduate, presented research conducted with Dr. Baird-Zars and MCRP student Amara Thompkins on flash flood modelling for New Jersey that incorporates non-traditional and community data at the American Collegiate Schools of Planning annual conference.

Dr. Baird-Zars is also on the advisory board of an EPA-funded project to help design community-engaged flood and pollution information systems in New Jersey's frontline communities that is currently partnering with New Jersey Environmental Justice Alliance.

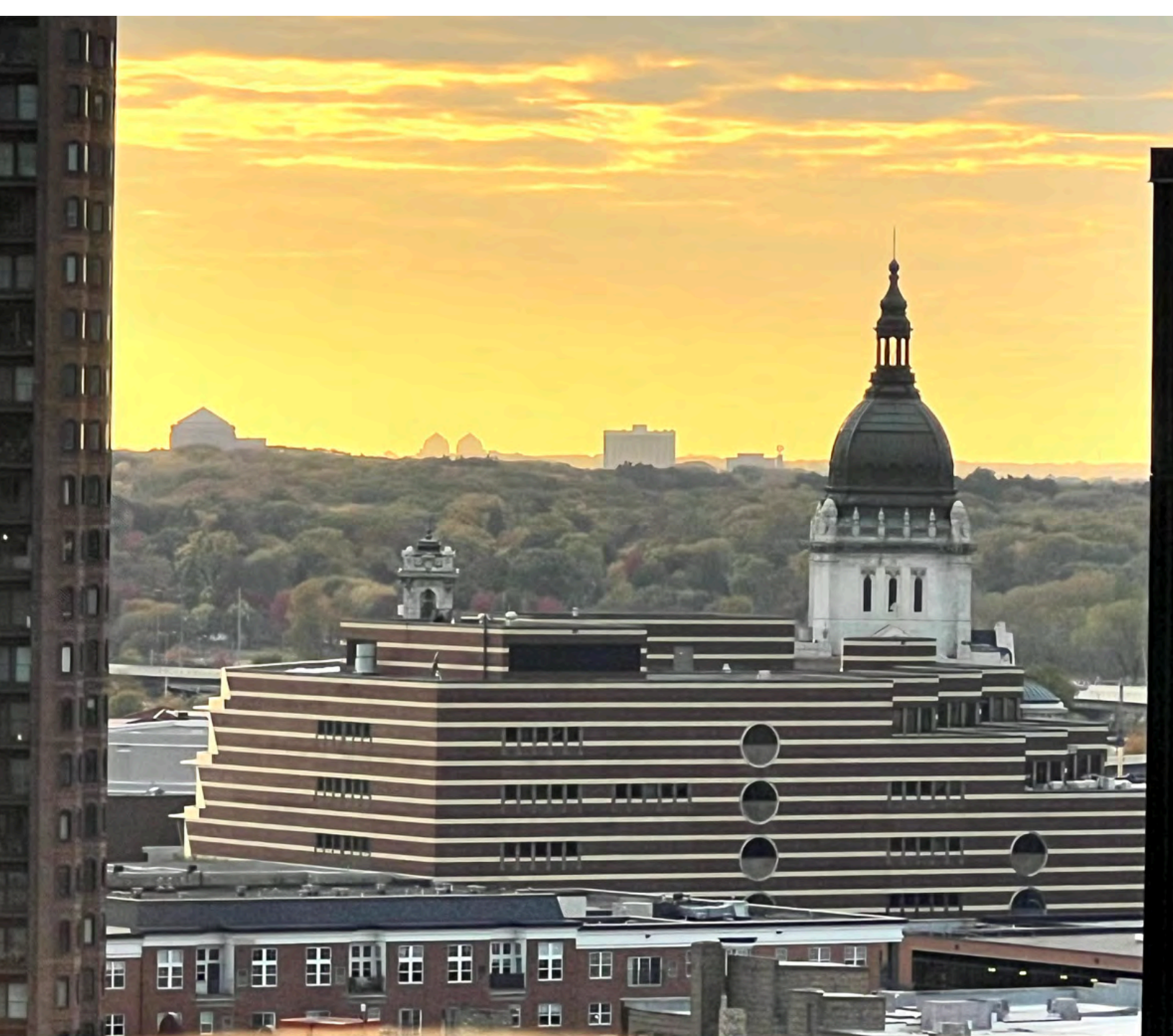
With Dr. Abigail Andrews, a postdoc at the Bloustein School, Dr. Baird-Zars is co-leading a small Rutgers Climate and Energy Institute project examining data for community resilience hubs in New Jersey and beyond.

Dr. Baird-Zars continues her work as a core member of the Resilient Coastal Communities Project, advocating with the New York City Environmental Justice Alliance for community leadership in flood adaptation; a team member there presented her paper in progress at the American Collegiate Schools of Planning that identifies specific roles and practices of 32 cases underpinning adaptation processes that were deemed as successful by their frontline communities. With Kenismael Santiago, a Ph.D. Student, the team will develop a second paper focused on participation strategies across contexts.

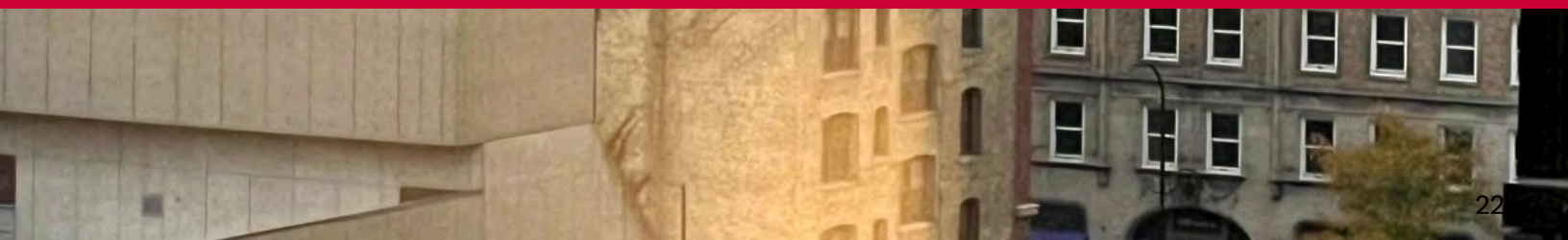
Transfer of Development Rights

With a grant from the Progress & Poverty Institute, Professors Mi Shih and Kathe Newman and doctoral students Yu Wang and Bridget Fisher are exploring transfer of development rights (TDR) in New Taipei City, Taiwan and East Midtown, New York City. They are exploring how, why, and with what implications TDR is integrated into redevelopment planning. The teams have completed their research and are drafting their report.





RWV CENTER PUBLICATIONS



Books

Shih, Mi and Newman, Kathe. Ed. *The Politics of Land and Value*. Routledge. In production. Estimated 2026 publication date.

Journal Articles Under Review

Mian, N. TBD. "Qualifying Density Bonuses: The Case of Faith-based Affordable Housing in Seattle." Manuscript under review.

Talks

Nadia Mian was invited to the University of Notre Dame to speak about the intersection between urban planning and houses of worship for the Church Property Initiative's Eucharistic Culture Project on July 29th in South Bend, Indiana.

Nadia Mian spoke at the Supportive Housing of New Jersey member meeting on faith-based affordable housing on October 1st in Trenton, NJ.

Nadia Mian gave a talk about faith-based affordable housing at the New Jersey Homes cohort meeting on October 29th in Trenton, NJ.

Media Engagement

Caimi, L. (2025, October 16). Pastors, Property & Purpose. [Nadia Mian, quoted]. *Columbus Business First*.

Hahn, H. (2025, October 10). State gives big boost to church housing plan. [Nadia Mian, quoted]. *UM News*.

Webinar

Villanova University's Center for Church Management invited Nadia Mian to virtually present her research on faith-based affordable housing and Seattle's faith-based density bonus on November 14th.

Blog

Seymour, Eric. (2025). Mapping Corporate Landlords in New Jersey. New Jersey State Policy Lab Blog. July 21. <https://policylab.rutgers.edu/publication/mapping-corporate-landlords-in-new-jersey/>



RWV CENTER EVENTS

CELEBRATION OF BLOUSTEIN BOOK PUBLISHING

September 29, 2025

The RWV Center in collaboration with the Dean's Office and doctoral program brought together faculty, alumnae, and students in a **Celebration of Bloustein Book Publishing** focused on communities. Faculty member Carmelo Ignaccolo discussed his book, *Small-Town Renaissance* (with Giovanna Fossa and Brent D. Ryan), alumna Laura Wolf-Powers talked about her book *University City*, and alumnus Andrew Zitcer shared his work with Tom Borrow, *Democracy as Creative Practice*. Alumna Akira Drake-Rodriguez's work *Diverging Space for Deviants* was also discussed. Doctoral students Bridget Fisher and Soo Yeon Lim moderated panels while Sophia Fox-Dichter, Lina Moe, and Yu Wang discussed the texts.



RWVC WELCOME BACK

September 5, 2025



The RWV Center kicked off the semester with a welcome back event for affiliated faculty and student researchers.

Ideas for workshops and events were made in conversation with Center affiliates and students.

ACSP CONFERENCE PRESENTATION PRACTICE

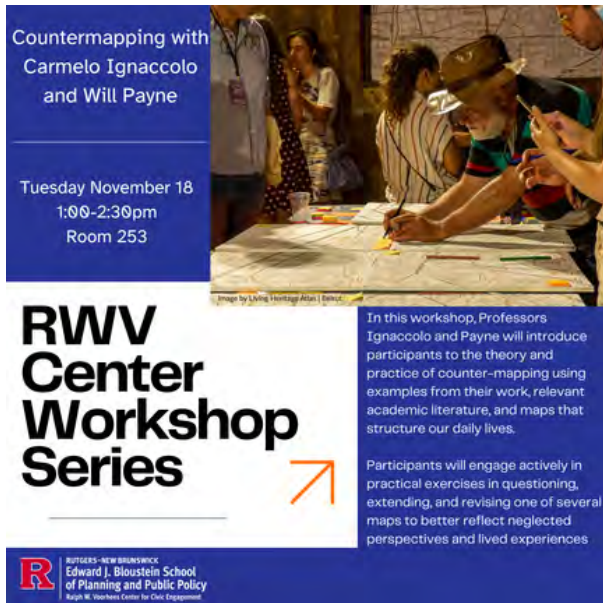
October 17, 2025



Doctoral students Soo Yeon Lim, Angela Johnson, and Triparnee Kushari practiced their presentations for the Association of Collegiate Schools of Planning annual conference. Soo discussed her work on flower farms in South Korea in her presentation, "From Flower Farms to High-Rises: Reading Peri-Urban Land Transformation in Greenbelts, South Korea." Angela shared her work on transporation equity entitled, "Two Wards and Two Paths in Pursuit of Transportation Equity: The Case of Slow Streets Program in Washington D.C.," and Triparnee talked about online food delivery systems "The Production of Spaces & Places by Food Delivery Platforms in Kolkata, India."

COUNTER-MAPPING WORKSHOP

November 18, 2025



The RWV Center held its first workshop for early career scholars to explore research methods and test theories. Professors Ignaccolo and Payne introduced participants to the theory and practice of counter-mapping using examples from their work, academic literature, and maps that structure our daily lives. During the workshop, students and faculty engaged actively in practical exercises in questioning, extending, and revising one of several maps to better reflect neglected perspectives and lived experiences.

VOORHEES FELLOWS PRESENTATION

December 8, 2025

The Voorhees Fellows presented their research on "The Emergency Food System in New Brunswick" to community organizations, family, friends, and faculty.





RWV CENTER ACTIVITIES



RU ENGAGED

RU Engaged is a Chancellor-funded effort to support community engaged teaching and learning. The project, led by Cara Cuite and Kathe Newman, includes a series of Byrne First Year Seminars with embedded Spring Breaks and the creation of a faculty community of those interested in community engaged teaching. **RU Engaged** is a partnership of the School of Environmental and Biological Sciences and the Edward J. Bloustein School of Planning and Public Policy along with the Byrne Seminar Office, the Office of Spring Breaks, Rutgers Cooperative Extension, and the Voorhees Center.

The team hosted a well-attended **inaugural faculty convening on November 7th** at the Bloustein School. **Course planning for Spring 2026** is underway with students enrolling in the Byrne and faculty, students, and community partners planning the Spring Break projects with Unity Square Community Center and Elijah's Promise.



RUTGERS NEW BRUNSWICK

RU ENGAGED NEW BRUNSWICK FACULTY GROUP

NOVEMBER 7TH 12-1:30PM - ROOM 261
EDWARD J. BLOUSTEIN SCHOOL OF
PLANNING AND PUBLIC POLICY
33 LIVINGSTON AVENUE, NEW BRUNSWICK, NJ

You are invited to attend the inaugural convening of the RU Engaged New Brunswick Faculty Group to support faculty who teach community engaged for-credit courses such as practica, studios, and those with service learning or course-based research projects.

Our first meeting will present an opportunity to discuss how we can support and learn from each other. Attendees will help shape the group's goals and the direction of our next convenings.

If you're interested in attending, please complete this registration application form. Space is limited, so please register today. Lunch will be served.

Register: go.rutgers.edu/ru-engaged-lunch

This meeting is supported by a Chancellor Challenge Grant to SEBS, Bloustein, Byrne Seminars, and the Division of Student Affairs.
Contact: Cara Cuite (cuite@sebs.rutgers.edu) or Kathe Newman (knewman@rutgers.edu) for questions or more information.



RU Engaged?

First-year Byrne Seminar with embedded Spring Break

-  **Apply to be in the program**
BRIEF application required, see below. Admissions are on rolling basis, decisions beginning Nov 14.
-  **Take a 1-credit class**
Spring 2026 Byrne Seminar focused on community food security. Fridays 12:10-1:30 on Cook Campus
-  **Spend Spring Break together!**
Stay at a local hotel and enjoy a no-cost fun-filled week of service learning, tours, community work, activities, and reflection.

Interested?



Apply here: https://go.rutgers.edu/ru_engaged_byrne_application
Questions? Email cuite@sebs.rutgers.edu or knewman@rutgers.edu





CONFERENCES



Urban History Association Conference Los Angeles, California October 9-12, 2025



Carmelo Ignaccolo presented "Against the Map: Historical GIS, Multisensory Surveys, and Participatory Atlases for Urban Design Justice."

Association of Collegiate Schools of Planning Minneapolis, Minnesota October 23-25, 2025

Bernadette Baird-Zars, along with Wenfei Xu, presented "Measuring Integration in Affordable Housing with Location Data." Dr. Baird-Zars, along with Sean Lamb and Amara Thompkins, also shared their research, "Floods that matter? Modelling multiple sources of flash flood reports in New Jersey." In addition, she also discussed her research with Elizabeth Steward and **Soo Yeon Lim**, "Seeing from the ground: meso-level land use planning in metro Seoul, San Antonio, and Guadalajara." Dr. Baird-Zars also presented the paper, "Relationships to action: fair and accountable flood adaptation in US coastal frontlines," co-authored with Paul Gallay, Hoi Nam Hellas Lee, Amelia Ying Ding, Annel Hernandez, and Victoria Sanders. Dr. Baird-Zars also helped organize a roundtable discussion, "Under Review: Addressing Critical Challenges in Urban Planning Journals."

James DeFilippis, along with Laura Wolf-Powers, presented "Externalities and the logic of public development planning in New York City."

Bridget Fisher*, along with **Kathe Newman**, discussed "Governing the Public Realm: Negotiating Air, Light, Mobility, and Property Rights in East Midtown."

Triparnee Kushari shared her research on "The Production of Spaces & Places by Food Delivery Platforms in Kolkata, India."



Sophia Fox-Dichter* presented “Who Says Where’s Good? The Evolution of Good Cause Eviction Laws in New York State?”

Carmelo Ignaccolo participated in a roundtable discussion entitled, “Signals of Inclusion,” about the role design can play in creating inclusive spaces. Dr. Ignaccolo also presented his work, “Sensing Conviviality and Contestation in Urban Marketplaces.”

Soo Yeon Lim* shared her research, “From Flower Farms to High-Rises: Reading Peri-Urban Land Transformation in Greenbelts, South Korea.”

Will Payne, along with **Jovanna Rosen** and Jamaal Green, discussed, “Digital Capitalism Meets Urban Planning: Plotting the Future of Technology and the City.”

Andrea Restrepo-Mieth presented, “Water Utilities and National Affordability Mandates: Evidence from Colombia.”

Eric Seymour’s research “RealPage’s Reach: Algorithmic Pricing and Housing Market Collusion” was presented. The research was co-authored with Renne Tapp, Taylor Shelton, and Ryan Pardue.



Mi Shih, along with **Yu Wang** and Ying-Hui Chiang, shared their research, “The City That Has Said Yes: Mapping the Workings and Spatiality of Density Tools in New Taipei City.” Dr. Shih was also the discussant for the session, “Rural Development and Transformation.” She also participated in a roundtable discussion entitled, “Planning Developmentalist Cities: Who Plans, How, and What It Means for the Public?”

Michael Smart shared his work, “Navigating the Complex Dynamics of Accessibility, Safety, and Mobility for Vulnerable Road Users,” co-authored with Xiaoxia Dong, Anne Brown, Joshua Davidson, Robert Schneider, and Jasmine Siyu Wu. Dr. Smart also was a discussant for the panel, “Getting the Kids to School: School Travel.”

**Housing and Community Development Network of New Jersey
Annual Conference and Membership Meeting
New Brunswick, New Jersey
October 24, 2025**



Nadia Mian participated in a panel discussion moderated by John Keller with Rev. Susan Kramer-Mills, Harold Colton-Max, and Rev. Angela Fields entitled, "Faith to Foundations: Transforming Assets into Affordable Living Spaces."

**Society for the Scientific Study of Religion
Minneapolis, Minnesota
October 31-November 2, 2025**

Nadia Mian discussed "Understanding Land Use Incentives for Affordable Housing on Religious Property: The Case of Seattle's Faith-based Density Bonus."

**Association for Public Policy Analysis and Management
Seattle, Washington
November 13-15, 2025**

Bernadette Baird-Zars discussed "Studying Integrated Spaces and the Policies that Support Them."

Sophia Fox-Dichter presented "Patterns of Churn in New Jersey's SNAP Caseload," co-authored with Andrea Hetling and Kirsten Meidlinger.

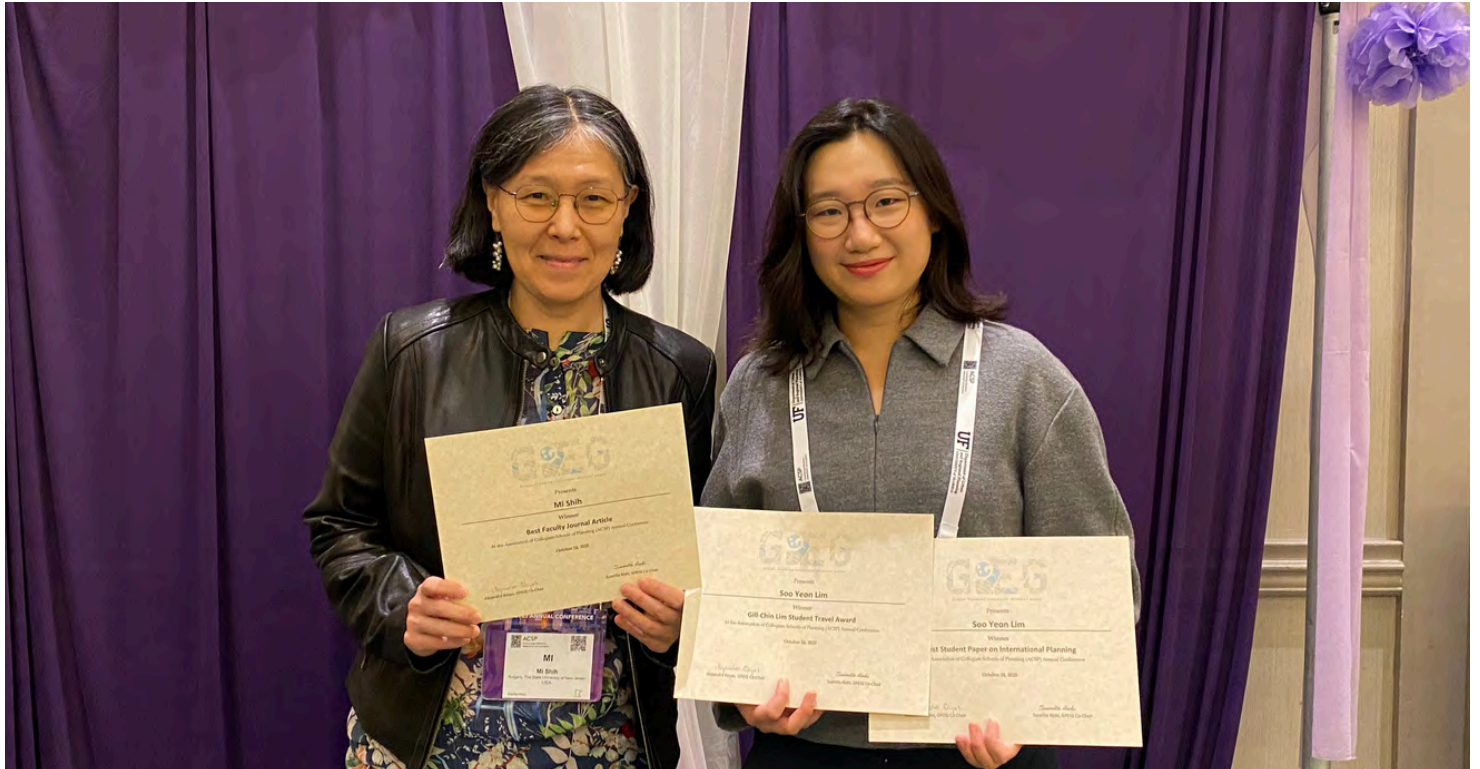


AWARDS



Soo Yeon Lim was awarded the **Gill Chin Lim Student Travel Scholarship** (GPEIG) from the Association of Collegiate Schools of Planning to travel to the conference in Minneapolis, Minnesota in October 2025.

The Association of Collegiate Schools of Planning Global Planners Education Interest Group (GPEIG) awarded **Soo Yeon Lim** the **Best Student Paper Award** for her work on “Contesting Publicness in Urban Peripheries: Lived Experiences of Flower Farmers in Greenbelt and Negotiated Housing Production in Gwacheon, South Korea.”



Professor Mi Shih was awarded the **Global Planning Educators’ Interest Group’s (GPEIG) 2025 Award for the Best Journal Article** for her work entitled, “A politically less contested and financially more calculable urban future: Density techniques and heightened land commodification in Taiwan,” with co-author with Ying-Hui Chiang, Department of Land Economics, National Chengchi University, Taipei, Taiwan. It appeared in *Environment and Planning A: Economy and Space*, Volume 56, Issue 6, September 2024.

Emmy Tiderington received the **2025 Rutgers University Innovation Award for Non-Patent Intellectual Property** for creating and licensing the evidence-based Moving On from Supportive Housing (MOSH) training materials. This award recognizes innovators who have developed a breakthrough idea, process, or technology that has shown its transformational potential to improve lives and create economic value.



Emmy Tiderington

An aerial photograph of a wide river valley. In the background, a large dam spans the river. The middle ground shows a city with dense greenery and some industrial or commercial buildings. The foreground features a highway bridge crossing the river. The sky is overcast.

INTERSECTIONS

A FOCUS ON FACULTY AFFILIATE ACHIEVEMENTS

Yen-Tyng Chen, Assistant Professor

Publications

Chen, Y. T., Knox, J., Almirol, E., Wiger, E. R., Pagkas-Bather, J., Huh, J., Chung, T., English, D., Duncan, D. T., and Schneider, J. A. (2025). "Cannabis and Alcohol Co-Use And HIV Biomedical Intervention Engagement Among Black Sexual/Gender Minority People: A Day-Level Analysis." *American Journal of Preventive Medicine*, 70(1), 108144. Advance online publication. <https://doi.org/10.1016/j.amepre.2025.108144>

Carmelo Ignaccolo, Assistant Professor

Books

Fossa, G., Ryan, B.D., and Ignaccolo, C. (2025). *Small-Town Renaissance: Bridging Technology, Heritage and Planning in Shrinking Italy*. Princeton: Springer Press.

Kathe Newman, Professor

Books

Shih, M., and Newman, K. Ed. *The Politics of Land and Value*. Routledge. In production. Estimated 2026 publication date.

Service

Kathe Newman is participating in the Big 10 Academic Leadership Program and is serving as Senior Research Leadership Faculty Fellow in the Rutgers New Brunswick Office for Research. She's completing her second term as an elected member of the Urban Affairs Association Governing Board.

Will Payne, Assistant Professor

Publications

Payne, W.B. (2025). "Gourmet Gentrification: Mapping Elite Tastes along New York City's Consumption Frontier, 1990-2015." *Environment and Planning A: Economy and Space*, 55(6): 776-793.

Fraser, E., Clancy, W., and Payne, W.B. (2025). "From the Urban Factory to the Metaverse: Understanding Datafication, Spatial Computing and Digital Twinning Practices." *New Media & Society*, 27(8): 4565-458.

Geronimo, L., Payne, W.B., Gilmore, E., Kopp, R., and Andrews, C. (2025). "Cultural and Institutional Factors Driving Severe Repetitive Flood Losses: Insights from the Jersey Shore." *Risk Analysis*, 45(11): 3519-3532.

Payne, W. B., Fraser, E., and Wilmott, C. (2025). "Digital Twin or Digital Kin: Misunderstandings and Myths about Urban Simulation, and Directions for Change." *Journal of Planning Education and Research*, 45(4): 733-742.
<https://doi.org/10.1177/0739456X251360632>

Emily Parker, Assistant Professor

Publications

Tach, L., Parker, E., Cooperstock, A., and Dodini, S. (2025). "Federal place-based policy and the geography of inequality in the United States, 1990-2019." *Social Forces*. soaf098, <https://doi.org/10.1093/sf/soaf098>

Ronald Quincy, Professor of Professional Practice, Visiting Senior Fellow for Diversity Studies, John J. Heldrich Center for Workforce Development

Service

Dr. Quincy served as special contributor to the New Jersey Governor's Task Force on Wealth Disparity (Co-chaired by the Lt. Governor, and President of Rutgers). He also served as special contributor to the New Jersey Governor's Task Force on AI (Working Group on Equity).

Funding

Dr. Quincy was awarded A Reciprocal Exchange grant by the US Department of State/IREX where he recruited an expert American team and led a mission to Kenya. He worked with the USA Embassy, in Nairobi, in partnership with local traditional leaders, in collaboration with a social enterprise; and on behalf of several hundred legacy small farm-holders in Taveta Kenya on this project.

Mi Shih, Associate Professor

Awards

Professor Shih was awarded the Global Planning Educators' Interest Group's (GPEIG) 2025 award for the best journal article for her work entitled, "A politically less contested and financially more calculable urban future: Density techniques and heightened land commodification in Taiwan," with co-author with Ying-Hui Chiang, Department of Land Economics, National Chengchi University, Taipei, Taiwan. It appeared in *Environment and Planning A: Economy and Space*, Volume 56, Issue 6, September 2024.

Books

Shih, M., and Newman, K. Ed. *The Politics of Land and Value*. Routledge. In production. Estimated 2026 publication date.



Andrea Restrepo-Mieth, Assistant Professor

Community Engaged Work

Dr. Restrepo-Mieth designed an urban tree inventory which included training materials and data collection via an existing app. She piloted the training of community members to carry out inventories themselves between June-July 2025 in the Galápagos, Ecuador.



Publications

Restrepo-Mieth, A. (2025). "Who wants a tree inventory and why? The politics of inventorying urban forestry in Galápagos, Ecuador." *Urban Forestry & Urban Greening* (112). <https://doi.org/10.1016/j.ufug.2025.128919>

Michael Smart, Associate Professor

Publications

Xie, N., and Smart, M.J. (2025). "Attractive Accessibility: Exploring Disparities in Attributes of Primary Care Physicians in New Jersey." *Health and Place* 95, doi: 10.1016/j.healthplace.2025.103535.

Jovanna Rosen, Assistant Professor

Publications

Rosen, J., and Alvarez León, L. (2025). "The variegated hinterlands of the digital growth machine." *Dialogues in Human Geography*. In press.
<https://doi.org/10.1177/20438206251398554>

Angst, S., Rosen, J., Painter, G., and De Gregorio, S. (2025). "Harassment or neglect? The influence of market pressures on landlord behavior." *Urban Studies*, 62(11), 2174–2201. <https://doi.org/10.1177/00420980241311502>

Emmy Tiderington, Associate Professor

Awards

Emmy Tiderington received the 2025 Rutgers University Innovation Award for Non-Patent Intellectual Property for creating and licensing the evidence-based Moving On from Supportive Housing (MOSH) training materials. This award recognizes innovators who have developed a breakthrough idea, process, or technology that has shown its transformational potential to improve lives and create economic value.

Publications

Enich, M., and Tiderington, E. (2025). "Physician perspectives on Z codes for social determinants of health screening." *Journal of General Internal Medicine*. Advance online publication. <https://doi.org/10.1007/s11606-025-09548-w>

Enich, M., Tiderington, E., and Cantor, J.C. (2025). "Physician explanation of Z-coded homelessness in Medicaid claims." *Health Services and Outcomes Research Methodology*. Advance online publication. <https://doi.org/10.1007/s10742-025-00360-x>



RUTGERS-NEW BRUNSWICK
**Edward J. Bloustein School
of Planning and Public Policy**
Ralph W. Voorhees Center for Civic Engagement



@voorheescivicengagement



rwv.rutgers.edu



**33 Livingston Avenue
New Brunswick, NJ, 08901**